

# Trailing Shield® 2.0™ - ID

## -Improved gas flow



### Description/Application

Shielding gas flow has a significant effect on weld quality. The new **Trailing Shield® 2.0™** include multiple layers of gas-diffusing mesh and a new nozzle which prevents the gas flow from becoming turbulent. It remains laminar and contributes to an even better gas coverage for the heat-affected zone (**HAZ**).

**Trailing Shield® 2.0™** is a state-of-the-art welding enhancement tool designed to interface with the industry's most common machine or manual gas tungsten arc welding (**TIG/GTAW**), metal arc welding (**MIG/GMAW**) and plasma welding (**PAW**) torches.

#### TITECH GROUP TITECH PRODUCTION AS

Stålverksvegen 46, 4100 Jørpeland | POST: Stålverksvegen 46, Jørpeland 4100, Norway | P: +47 45 20 56 22 |

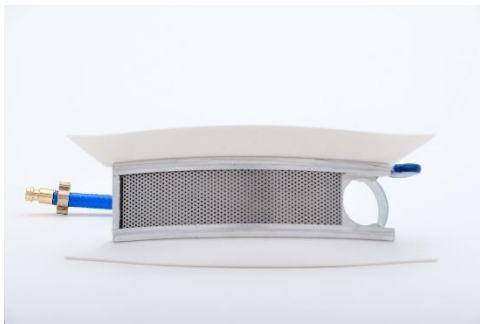
E: [post@titechpro.com](mailto:post@titechpro.com) | [www.titechpro.com](http://www.titechpro.com) | VAT: NO 920 916 570 MVA | BANK: SpareBank 1 SR-Bank ASA | ACC: 3205.24.67445 |

SWIFT: SPRONO22 | IBAN: NO90 3205 2467 445 | ISO 9001:2015 | ISO 14001:2015 | Achilles JQS |

## Operation:

Provides **100%** better gas coverage in the heat affected zone (**HAZ**) and prevents oxidation, weld defects, re-work and allows faster welding. **Trailing Shield® 2.0™** are designed for high quality gas coverage.

**Trailing Shield® 2.0™** with improved laminar gas distribution is specially designed for welding high alloyed metals.



## New Features:

- New gas nozzle specially made for laminar gas flow
- Multiple layers of gas-diffusing mesh (Stainless steel 316L)
- Precise gas filtration

## Benefits:

- Allows Faster Welding
- Bright & Clean Weld Surface
- Perfect Gas Shielding
- Prevents Oxidation/Weld Defects
- Improves Quality Of The Weld
- Eliminates Any Re-Work
- Reduces Gas Usage



## Tecnical data:

Size	6" - 76"
Length	145 mm (5,7 inch)
Weight	195 gram
Oxygen levels	0 - 30 ppm (HAZ)
Gas shut off valve	Yes
Silicon side shield	Resistant to temperatures up to 200°C (392°F)

All **Trailing Shield®** are made in Norway.

### TITECH GROUP TITECH PRODUCTION AS

Stålverksvegen 46, 4100 Jørpeland | POST: Stålverksvegen 46, Jørpeland 4100, Norway | P: +47 45 20 56 22 |

E: post@titechpro.com | www.titechpro.com | VAT: NO 920 916 570 MVA | BANK: SpareBank 1 SR-Bank ASA | ACC: 3205.24.67445 |

SWIFT: SPRONO22 | IBAN: NO90 3205 2467 445 | ISO 9001:2015 | ISO 14001:2015 | Achilles JQS |